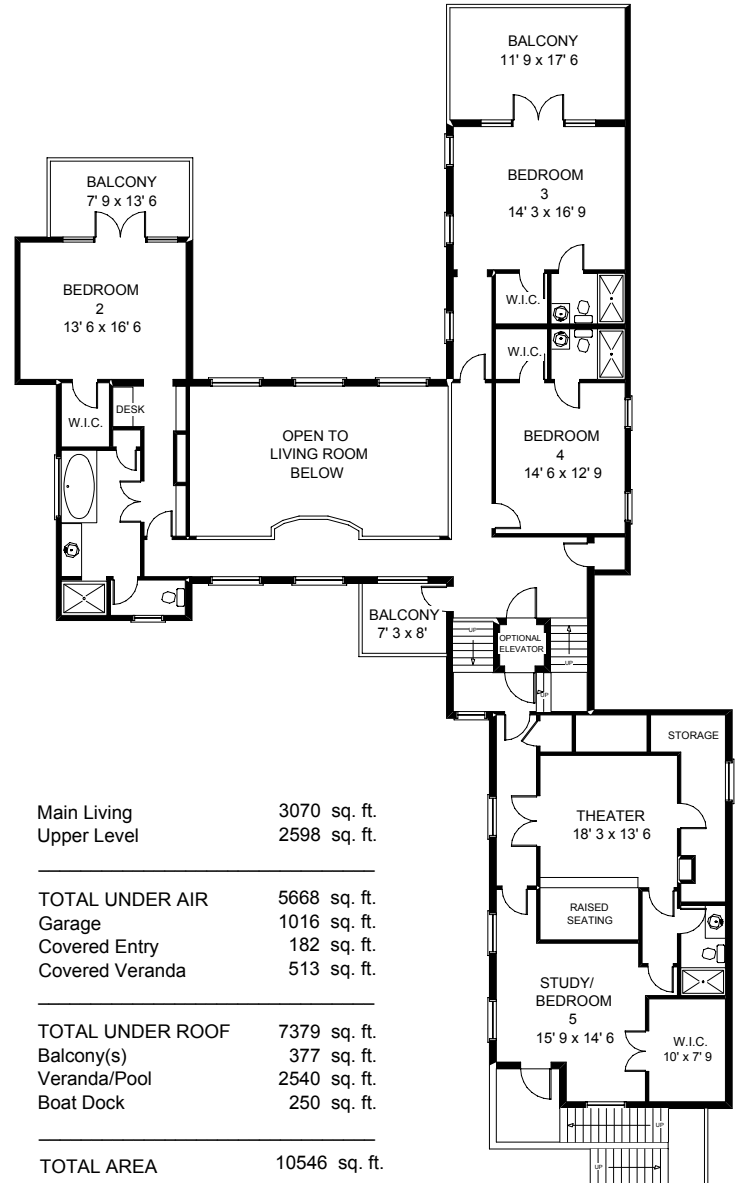
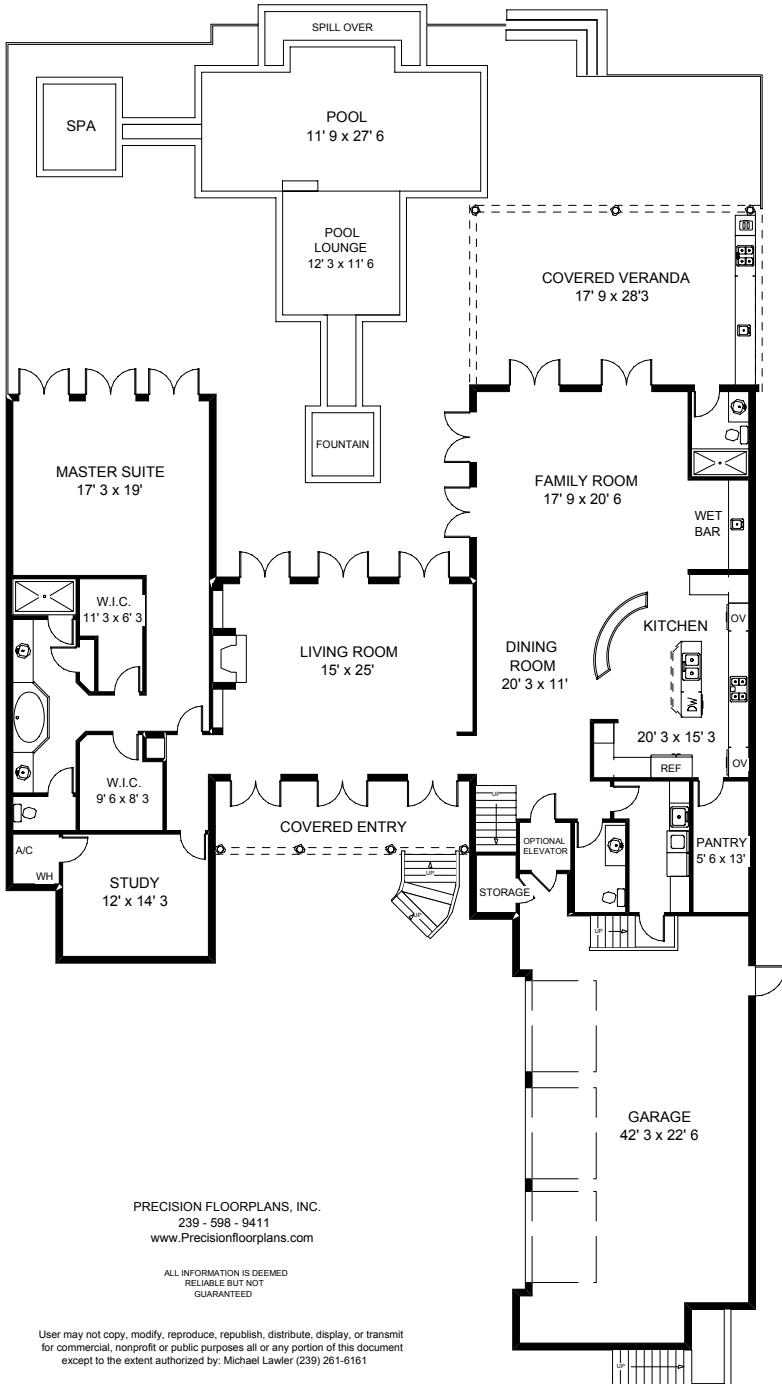


2163 21st COURT SOUTH
NAPLES, FL

BOAT LIFT
(6,000 lbs)

BOAT LIFT
(25,000 lbs)

BOAT
DOCK
50' x 5'



Main Living 3070 sq. ft.
Upper Level 2598 sq. ft.

TOTAL UNDER AIR 5668 sq. ft.
Garage 1016 sq. ft.
Covered Entry 182 sq. ft.
Covered Veranda 513 sq. ft.

TOTAL UNDER ROOF 7379 sq. ft.
Balcony(s) 377 sq. ft.
Veranda/Pool 2540 sq. ft.
Boat Dock 250 sq. ft.

TOTAL AREA 10546 sq. ft.

PRECISION FLOORPLANS, INC.
239 - 598 - 9411
www.Precisionfloorplans.com

ALL INFORMATION IS DEEMED
RELIABLE BUT NOT
GUARANTEED

User may not copy, modify, reproduce, republish, distribute, display, or transmit
for commercial, nonprofit or public purposes all or any portion of this document
except to the extent authorized by: Michael Lawler (239) 261-6161