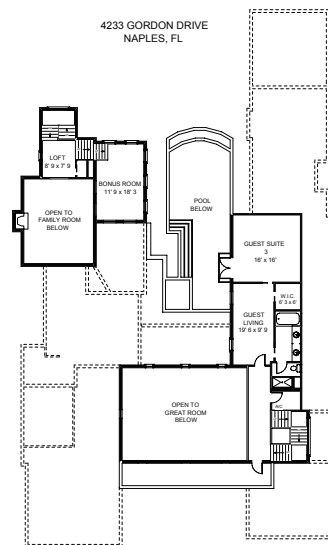
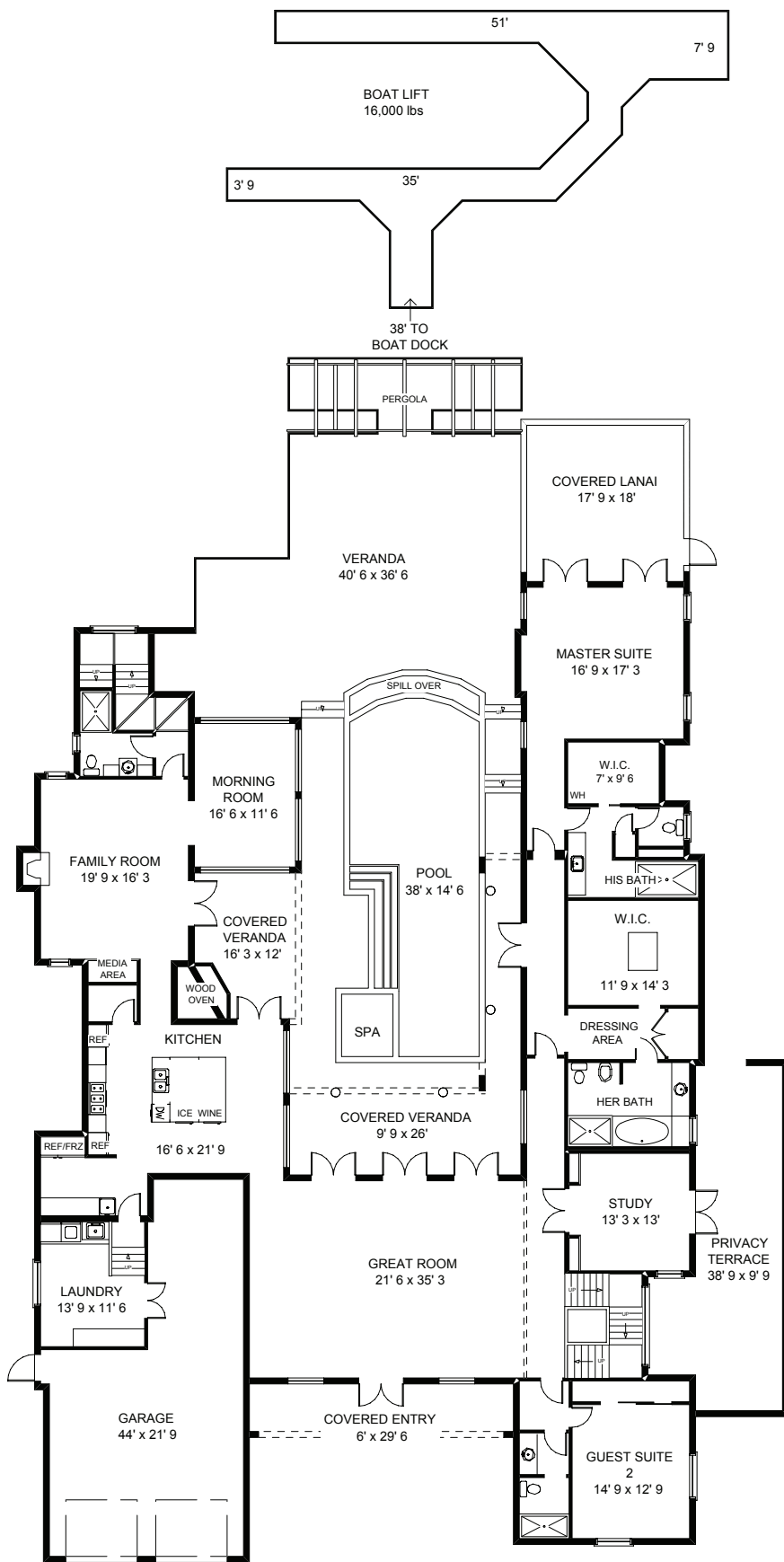


4233 GORDON DRIVE
NAPLES, FL



Main Living	4395 sq. ft.
Upper Level(s)	1386 sq. ft.
<hr/>	
TOTAL UNDER AIR	5781 sq. ft.
Garage	754 sq. ft.
Covered Entry	177 sq. ft.
Covered Veranda(s)	582 sq. ft.
Covered Lanai	343 sq. ft.
<hr/>	
TOTAL UNDER ROOF	7637 sq. ft.
Veranda/Pool	2143 sq. ft.
Privacy Terrace	468 sq. ft.
Boat Dock	468 sq. ft.
<hr/>	
TOTAL AREA	10716 sq. ft.

PRECISION FLOORPLANS, INC.
239 - 598 - 9411

ALL INFORMATION IS DEEMED
RELIABLE BUT NOT
GUARANTEED