

MGL

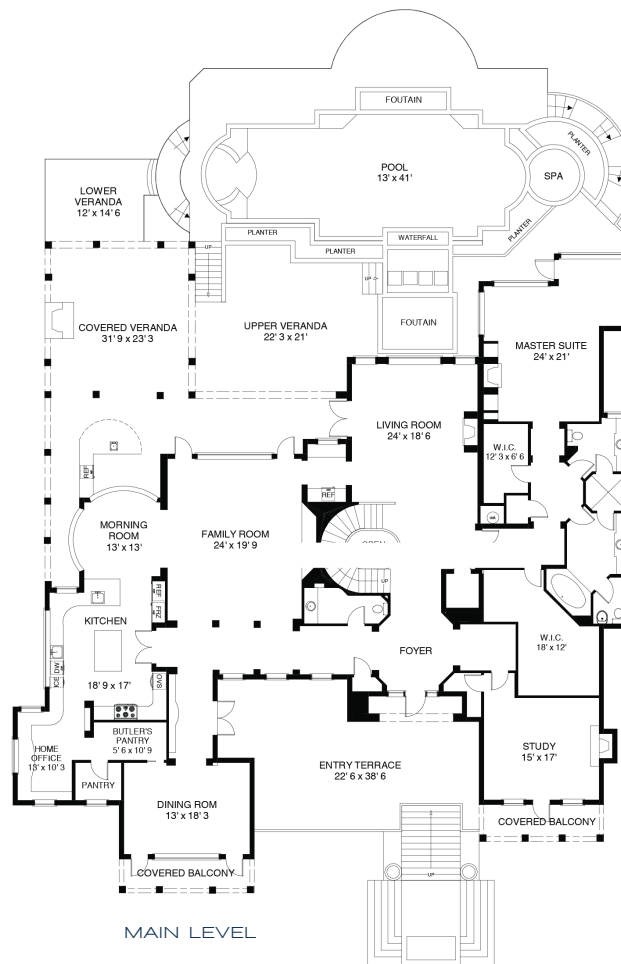
16660

CAPTIVA DR
CAPTIVA ISLAND - FLORIDA

DETAILS

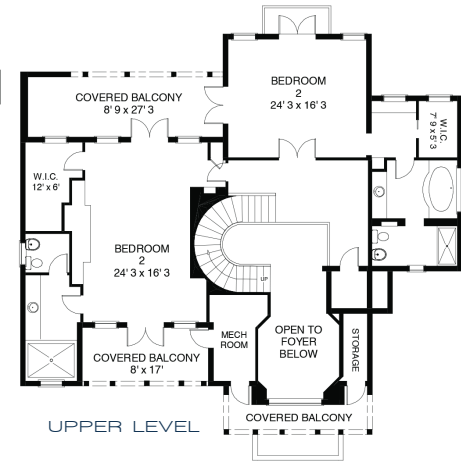
Bedrooms	5
Den	1
Bathrooms	5/1
Garage	3
Year Built	2003
Water Frontage	207 FT
Lot Acreage	2.09
PRICE	\$15,950,000

TOTAL AREA 15,962 sq ft*



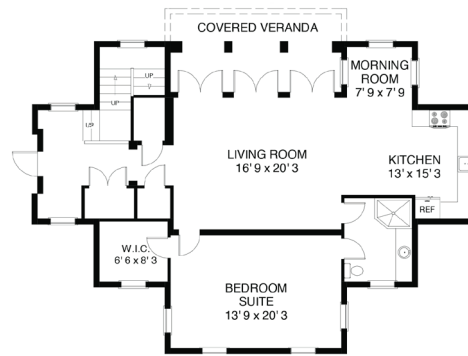
MAIN LEVEL

MAIN HOUSE

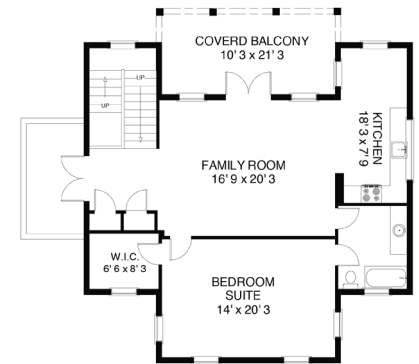


UPPER LEVEL

GUEST HOUSE



MAIN LEVEL



UPPER LEVEL

Known for its white-sand beaches and spectacular sunsets, Captiva is a haven for families, vacationers and those who enjoy a leisurely life-style. From fine homes to condominiums, resorts, villas and cottages, Captiva is the perfect refuge for living year-round or a getaway in the sun. From the fresh catch of the day to a round of golf, a game of tennis or myriad waters sports, Captiva has it all. You will discover an abundance of home styles to suit everyone from the young professional to the retired CEO.

MICHAELAWLER.COM

Michael G. Lawler | 800 Harbour Drive | Naples, FL 34103 | 239.261.3939

