

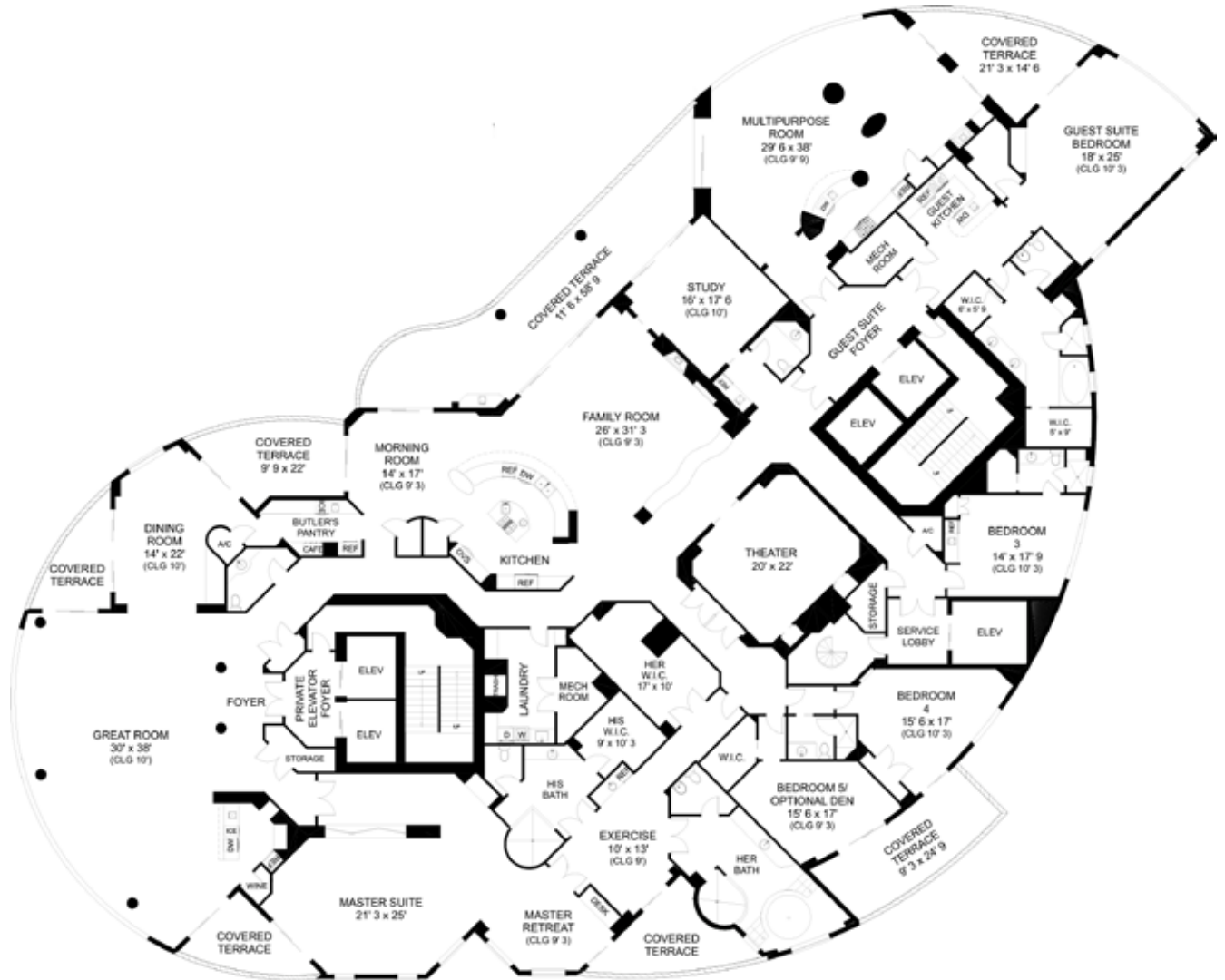
MGL

PH#4

REGENT
PARK SHORE - NAPLES

DETAILS

Bedrooms	5
Bathrooms	5/2
Den	1
Parking Spaces	3
Year Built	2002
PRICE	\$16,900,000
TOTAL UNDER AIR	12,050 sq ft*
Covered Terraces	1792 sq ft*
TOTAL AREA	13,842 sq ft*



MICHAELAWLER.COM

MICHAELAWLER.COM

Michael G. Lawler | 800 Harbour Drive | Naples, FL 34103 | 239.261.3939

